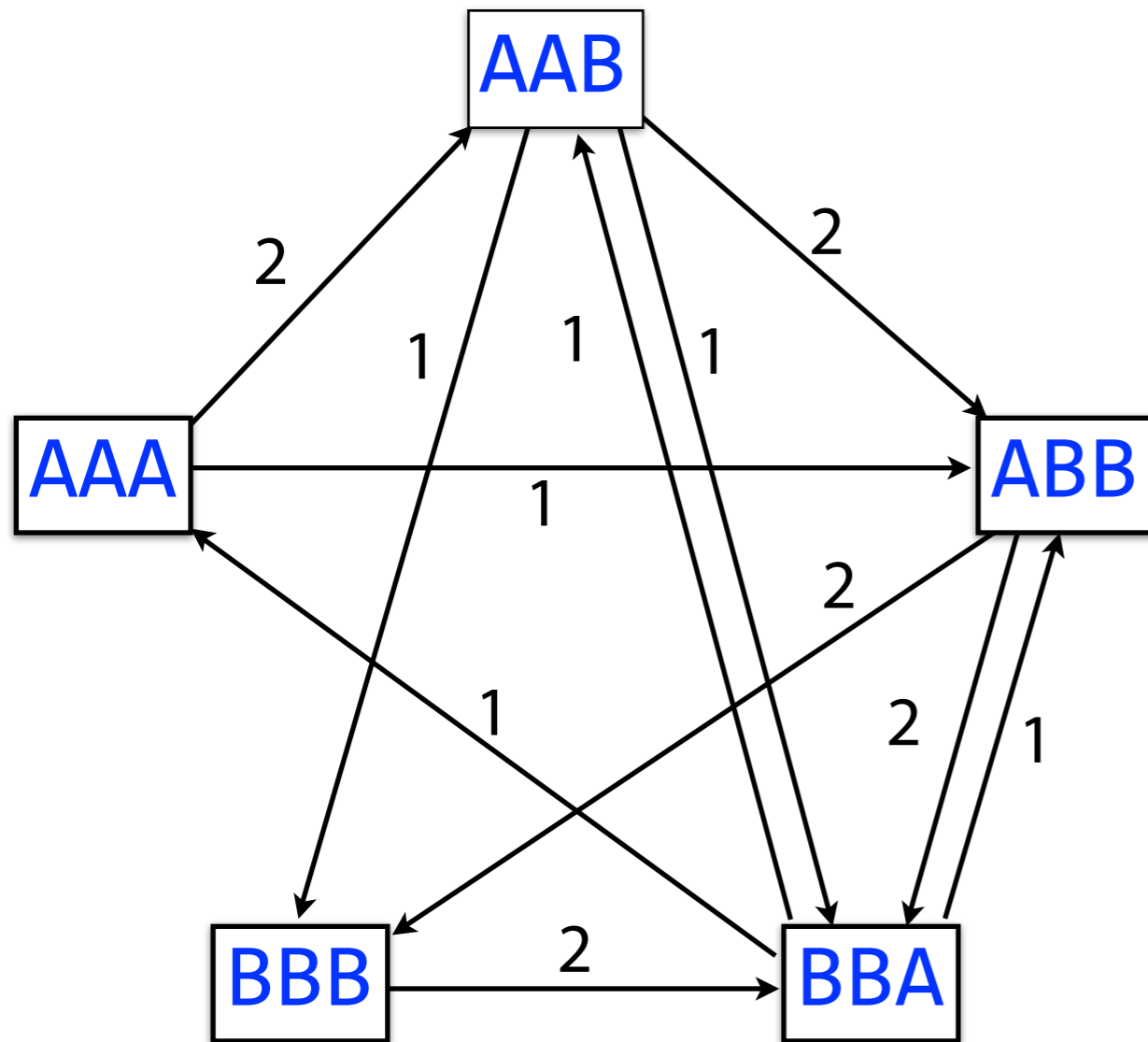
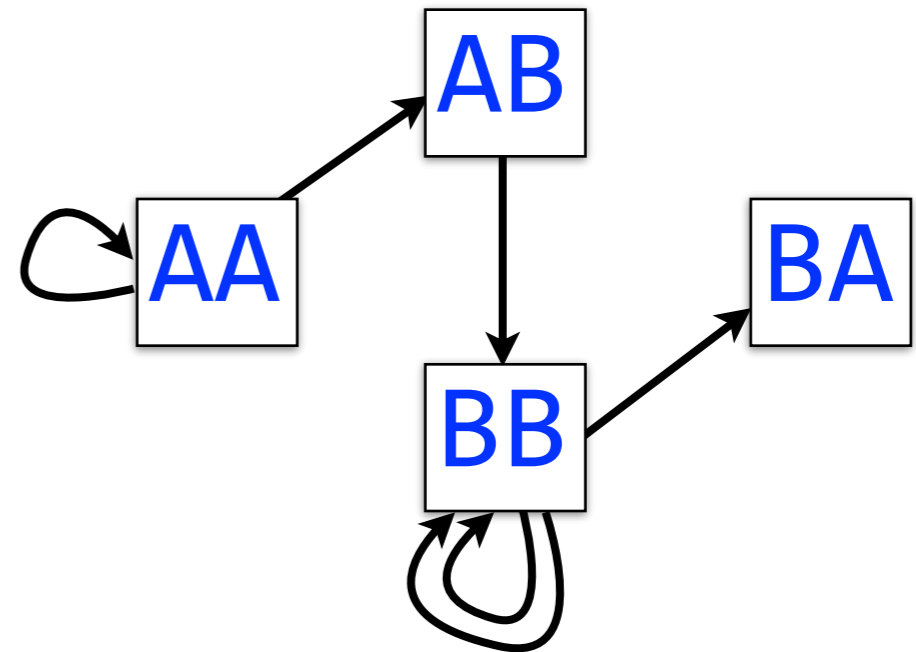


Overlap graph

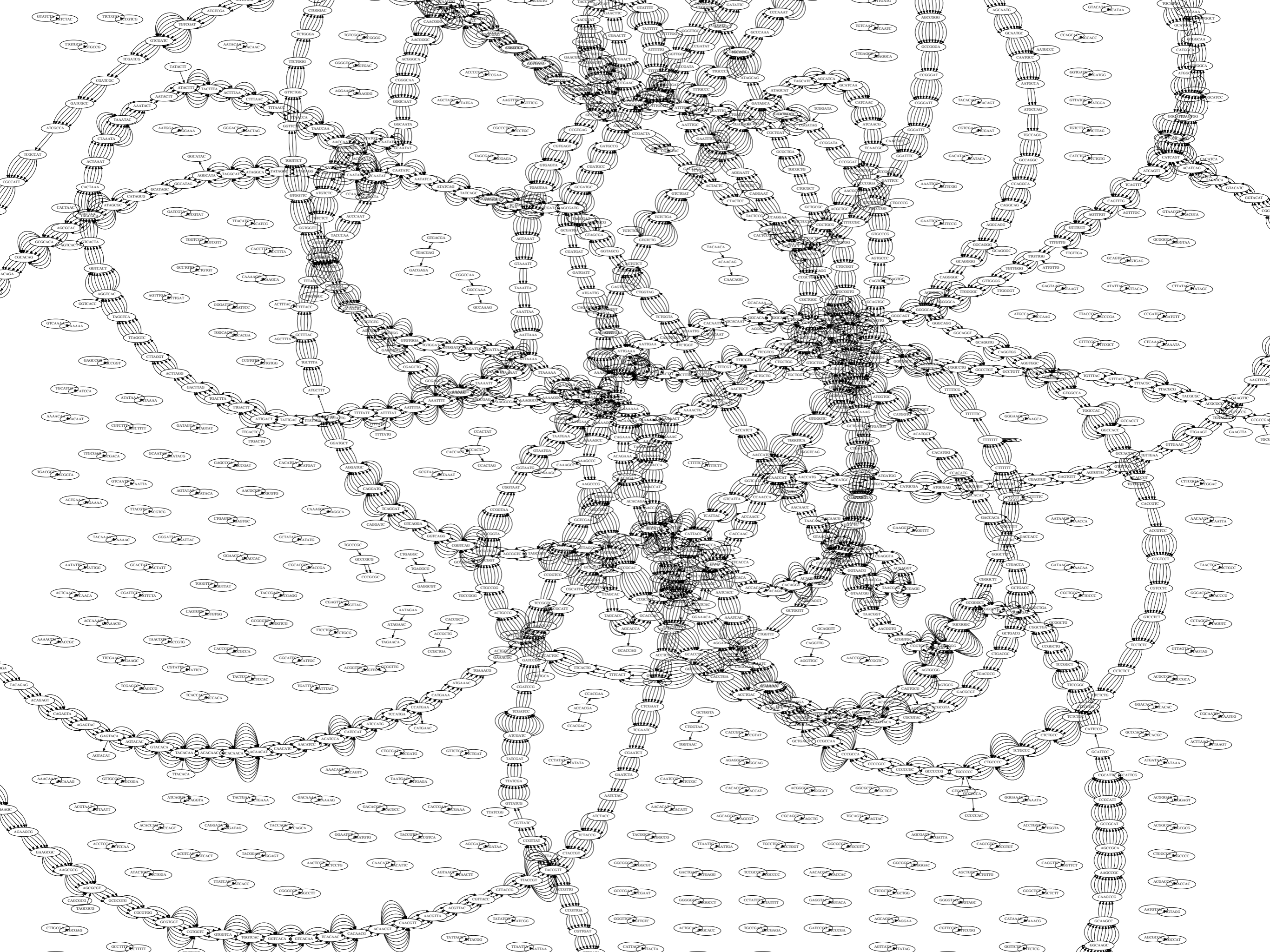


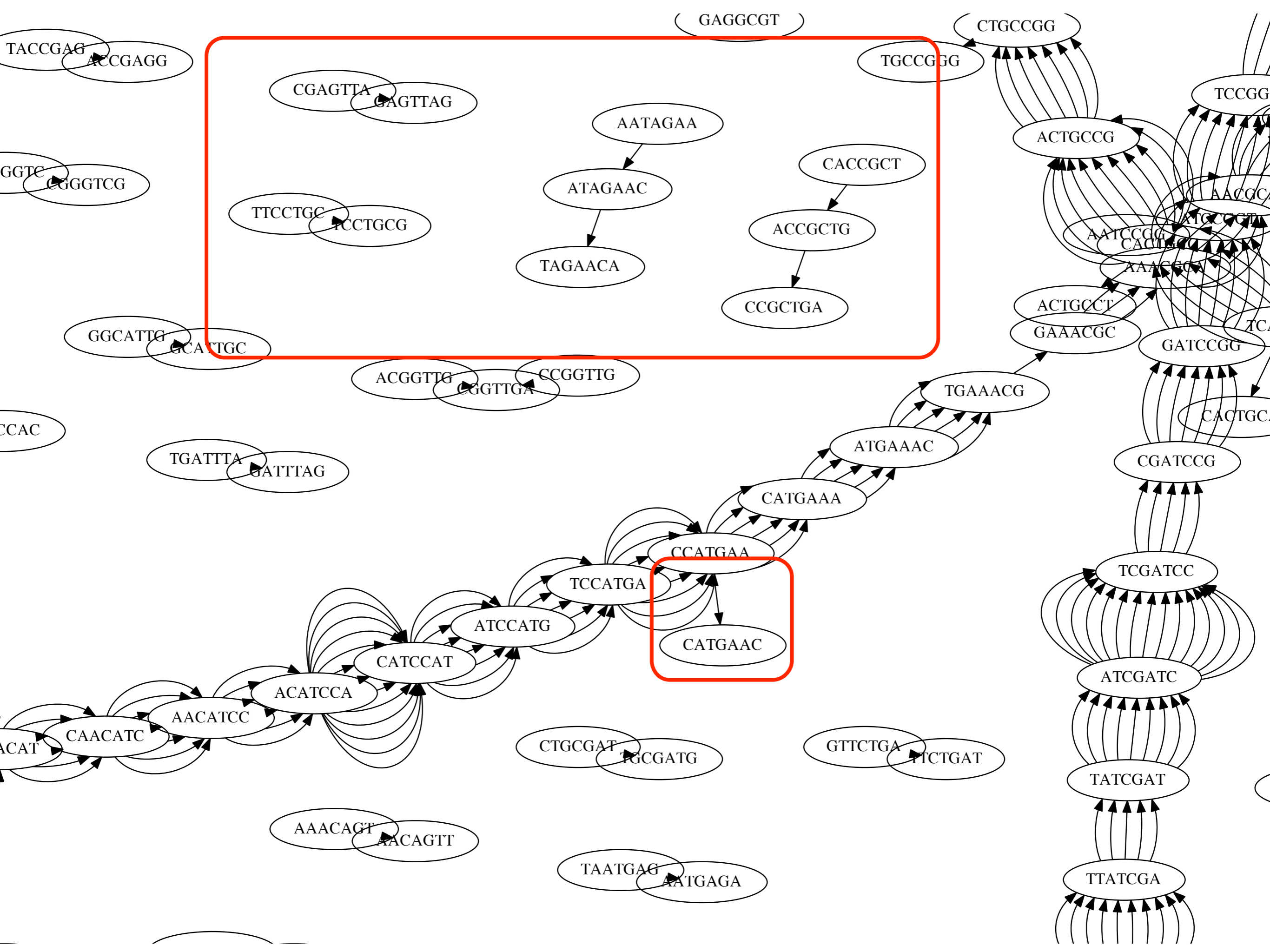
Overlap-Layout-Consensus
(OLC) assembly

De Bruijn graph

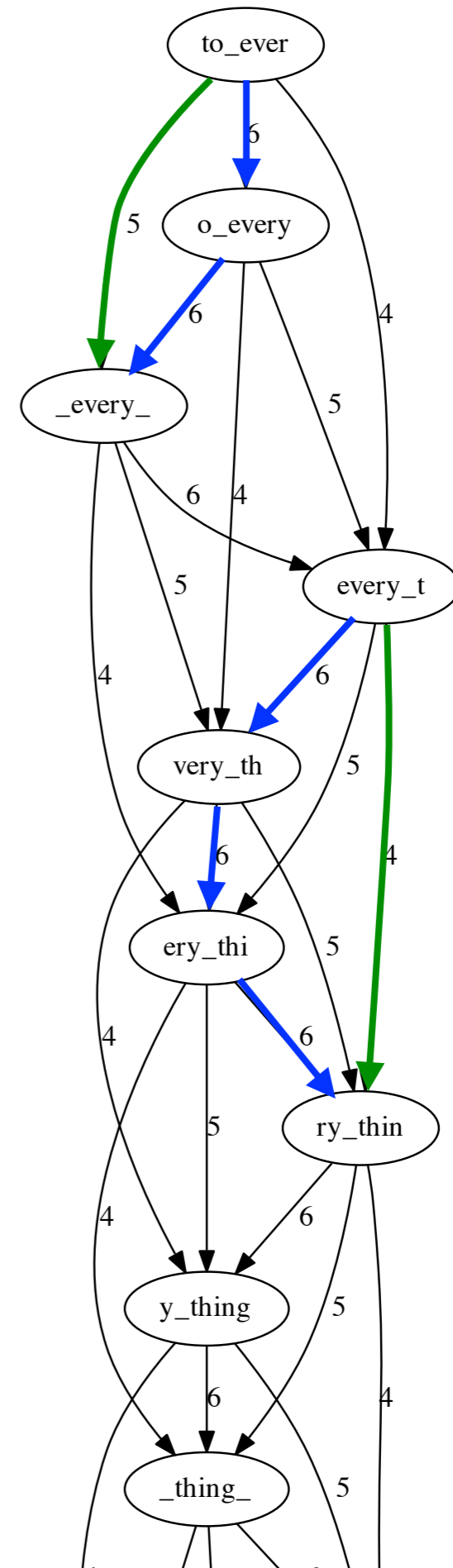


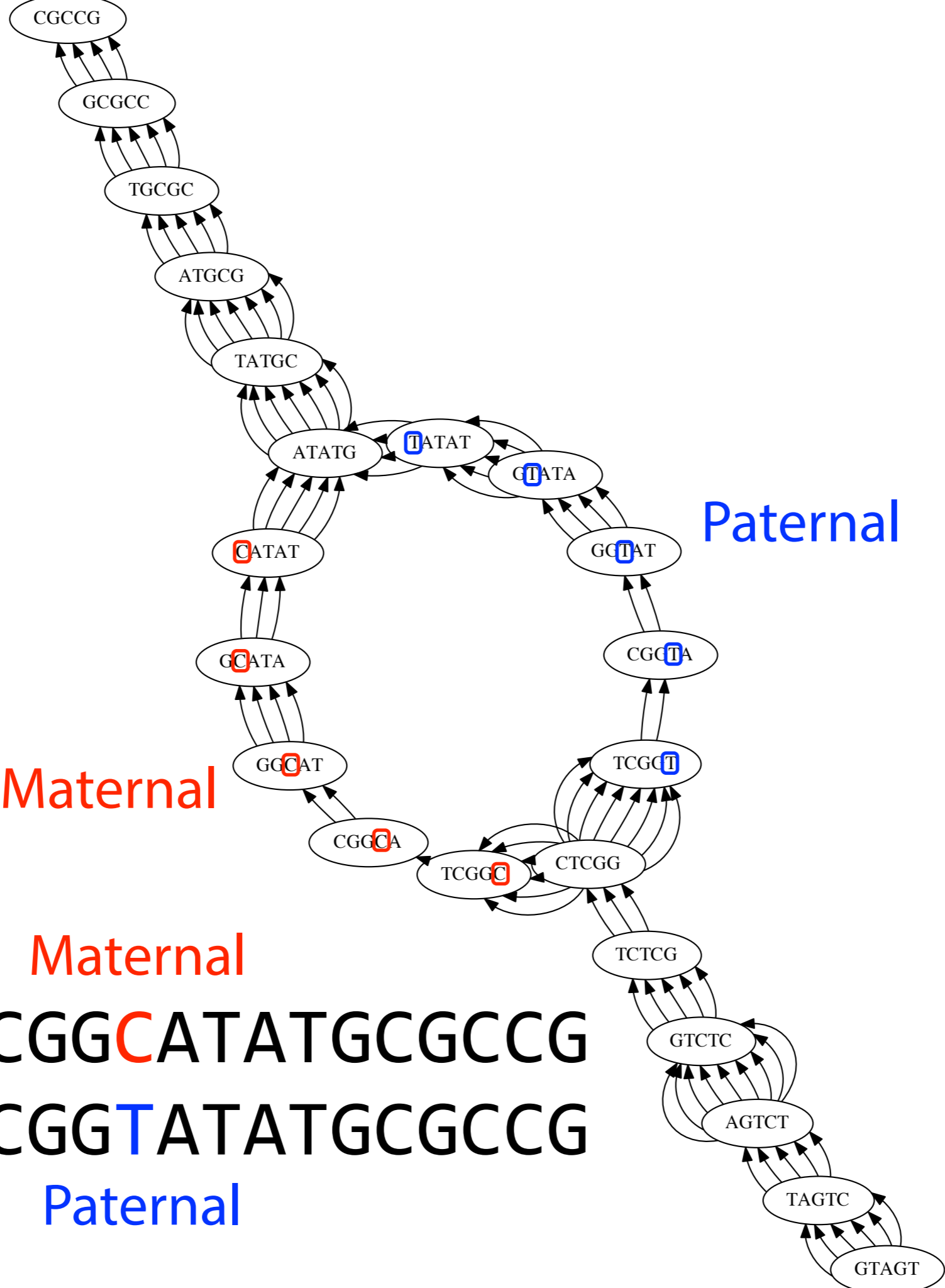
De Bruijn Graph based
(DBG) assembly





Green edges can be inferred from blue

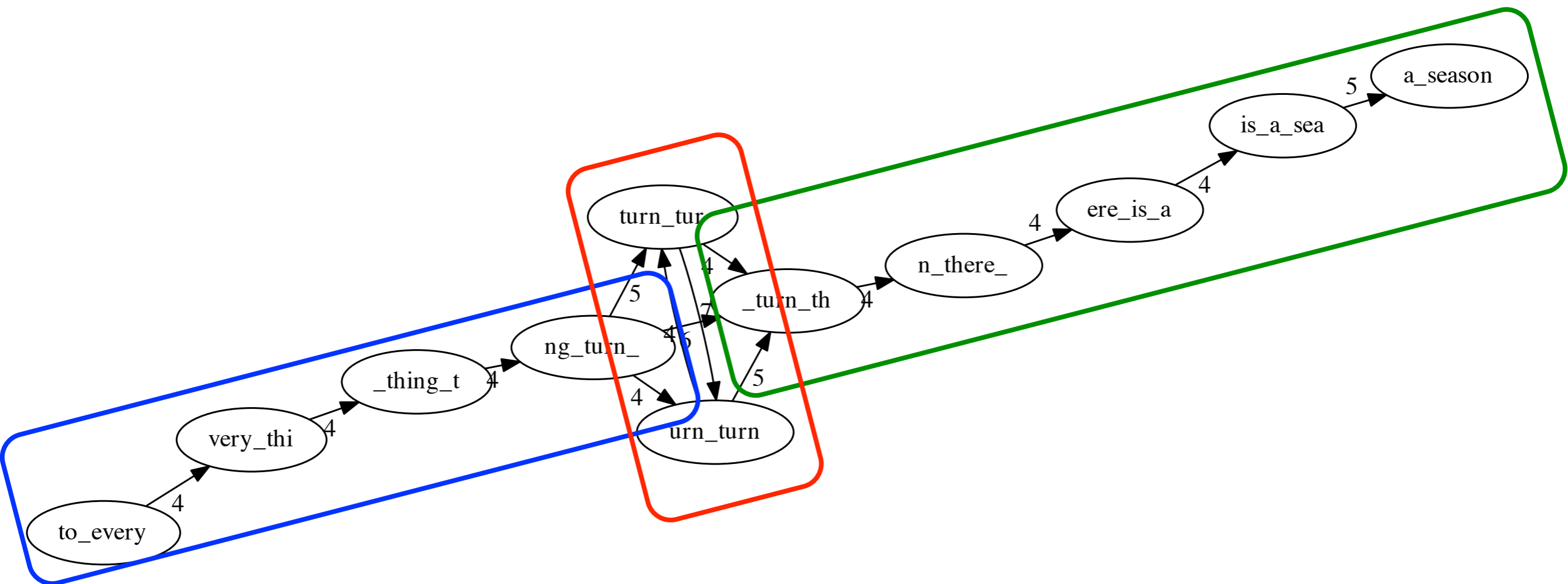




GTAGTCTCGG**C**ATATGCGCCG

GTAGTCTCGG**T**ATATGCGCCG

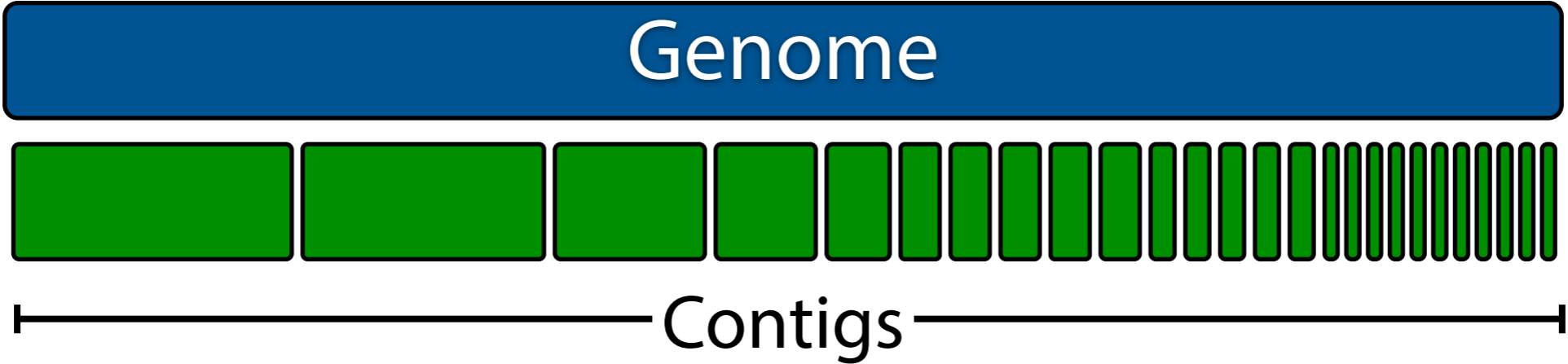
Paternal

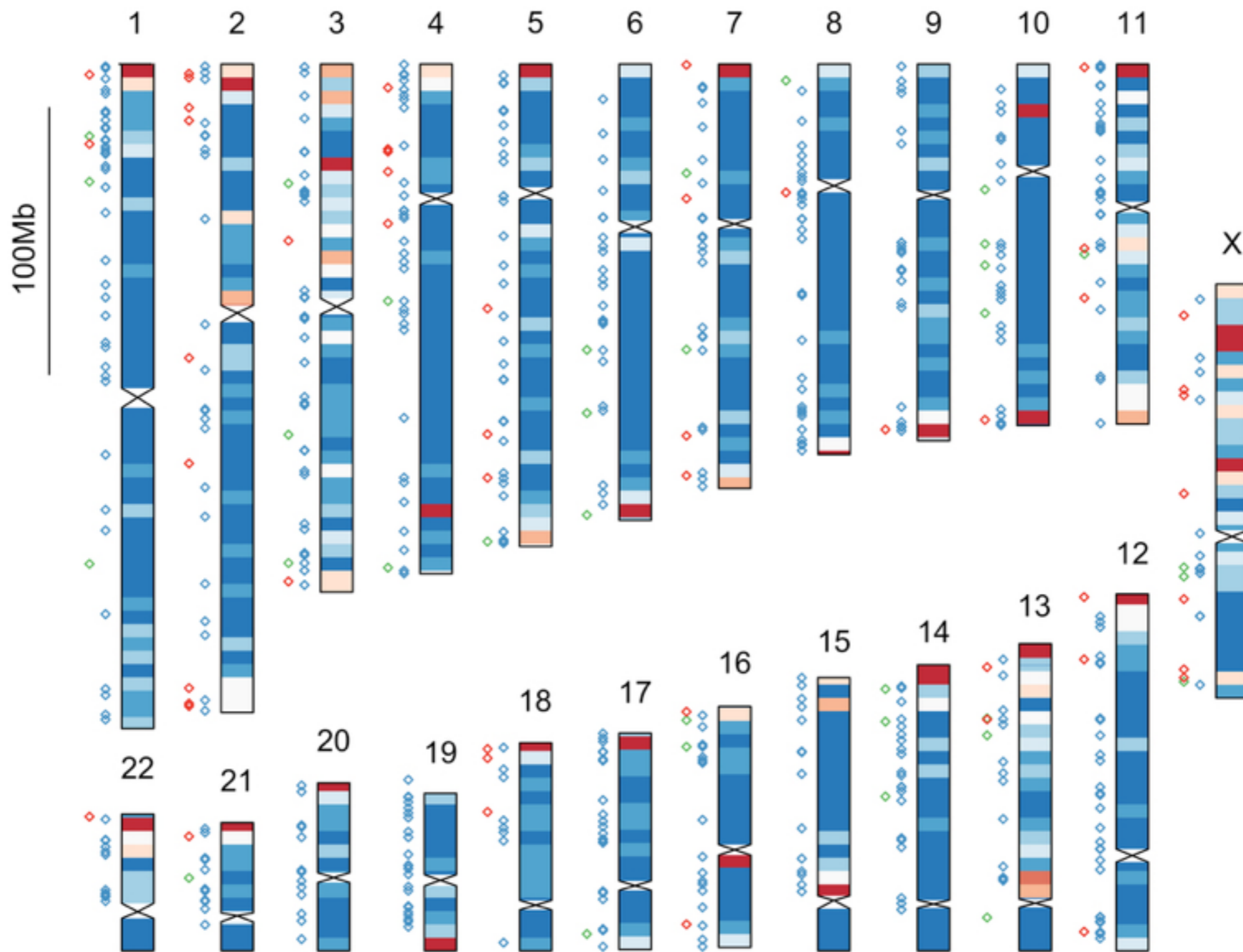


to_every_thing_turn_

_turn_there_is_a_season

_turn (repeated)





Chaisson MJ, et al. Resolving the complexity of the human genome using single-molecule sequencing. *Nature*. 2015 Jan 29;517(7536):608-11.